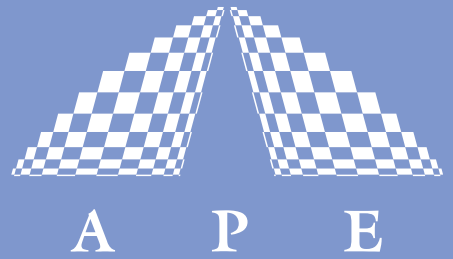
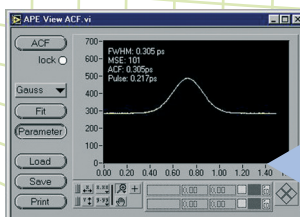
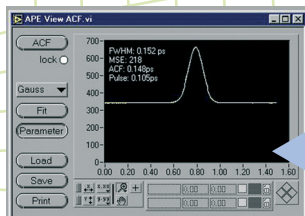
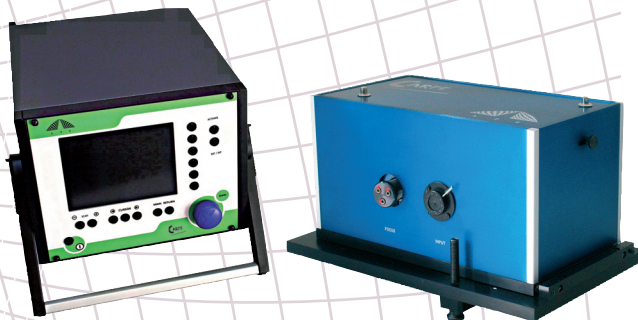


CARPE



AUTOCORRELATOR FOR MICROSCOPY



The **Carpe** is the first commercial autocorrelator to measure the pulse width of fs lasers at the output of laser microscopes behind the objective. The power of the laser behind the objective at the position of the sample can be measured as well with the power detector in the detector head.

The **Carpe** can measure the pulse width at both, the sample and the input position. This enables to examine the influence of the microscope optics on ultrafast pulses and to optimize the pulses at the relevant position. The **Carpe** works with high NA objectives as well as immersion objectives. Due to the thickness of the detector cover, the minimum distance required between the focal point of the objective and the housing of the objective (working distance) is 0.5 mm. To use objectives with a working distance below 0.5 mm, a short working option operating on a different detector principle is available.

The compact instrument is simply inserted into the beam between laser and microscope. It does not require any changes in the set up and does not interfere with the measuring beam.

- Power detector at sample position
- Easy alignment and operation
- fs resolution
- Wavelength (optional) and power measurement
- Windows control software included
- RS231 or USB interface
- Pulse width measurement
 - before microscope and
 - at sample position

Ultrafast Pulse Diagnostics

Wavelength Conversion

Pulse Management

Acoustooptics

Your Partner in Ultrafast

SPECIFICATIONS

Scan range	150 fs ... 15 ps
Measurable pulse width	50 fs ... 3.5 ps
Scan rate	~10 Hz
Wavelength range	700 ... 1100 nm
Minimum laser repetition rate	> 500 kHz
Sensitivity	1 W ²
Power detector measurement ranges	0 ... 30 mW 0 ... 300 mW
Working distance (standard)	> 0.5 mm (shorter optional)
Input polarization	Linear / horizontal

OPTIONS

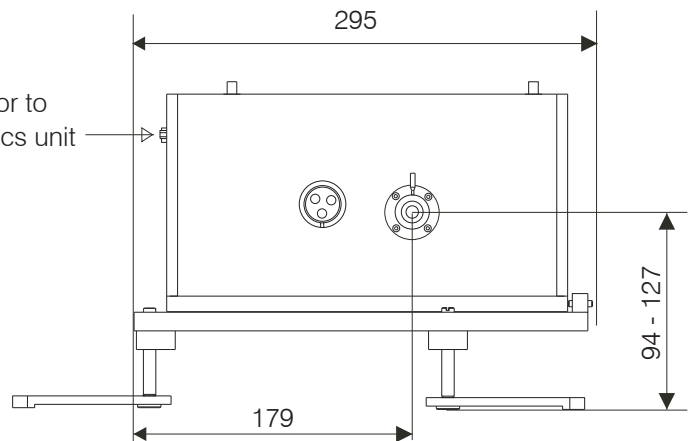
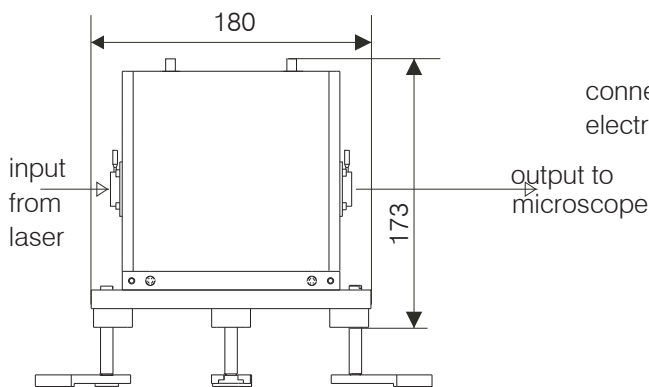
Short working distance option
 Wavelength measurement
 IEEE interface
 Dispersion management in combination with
 APE pulse compressor **FemtoControl**

DIMENSIONS (in mm)

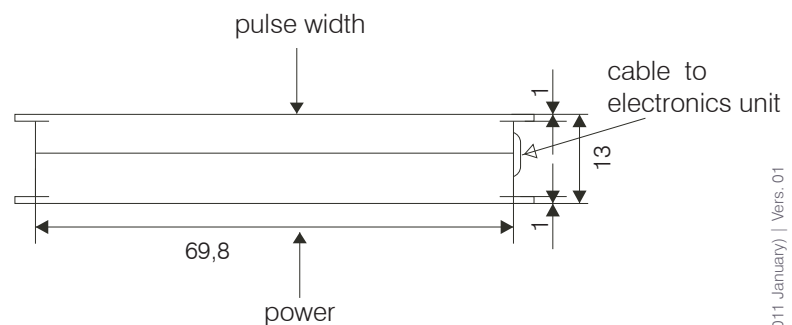
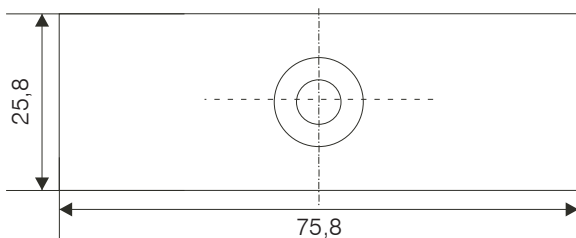
Control Electronics (W*L*H)

275*279*240

Optical Unit:



External detector:



Distributors

see APE website www.ape-berlin.com

APE GmbH Plauener Straße 163-165 Haus N / 13053 Berlin Germany

Phone +49.30.986.01130 Fax +49.30.986.011333 / Web www.ape-berlin.com Email ape@ape-berlin.de

APE follows a policy of continued product improvement. Therefore, specifications are subject to change without notice.

**PHOTO
TECHNICA**

フォートテカ株式会社

〒336-0017 埼玉県さいたま市南区南浦和1-2-17

TEL:048-871-0067 FAX:048-871-0068

E-mail: voc@photo Technica.co.jp

www.photo Technica.co.jp