

CW Fiber Lasers

General:

V-Gen's VCFL series of lasers are single mode CW, Ytterbium fiber lasers. Incorporating cutting edge technology, the single mode ($M^2 < 1.1$) high quality beam offers ideal optical performance for obtaining top results in precision-intensive applications as marking, material processing, micromachining and more.

An all-fiber system, the VCFL's RS232/ TTL control interface enables easy operation and precise tuning of laser output power, testing laser status, etc.-- for full and reliable system usage. V-Gen's VCFL lasers deliver constant and stable performance.

Emitting a high quality beam with a small spot, V-Gen's lasers are competitively priced yet provide a full range of specifications to meet a wide range of applications.

Housed in a robust compact assembly that meets the industrial standards and fitted with a metal armored fiber cable, the VCFL delivers a high quality, diffraction-limited output beam. The VCFL's solid construction is maintenance free and reliable, ensuring long-life operation at low operational cost.

Highlights:

- OEM ready
- Maintenance free for cost-saving operation
- Low weight and small size for easy deployment
- Simple parameter setting and system testing using a PC or hand-held computer
- Complies with the industry standard
- Tunable parameters for wide range of operations

Applications:

- Marking
- Material processing
- Micromachining
- Engraving
- Spectroscopy
- Medical
- Imaging
- Pumping



Main features:

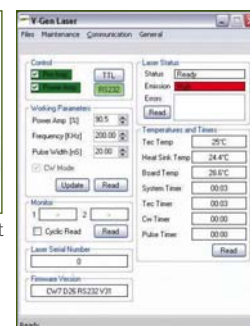
- RS232/TTL interfaces
- Wavelength 1060 – 1080 nm
- Up to 15 W output power
- High wall plug efficiency (>20%)
- Single mode beam quality ($M^2 < 1.1$)
- Forced air for efficient system cooling
- Optional output collimators with variety of beam diameters



High-Power Output Isolator



Evaluation kit



PC user application

Parameter	Unit	VCFL-7500	VCFL-15000
Operational mode		CW	
Wavelength	nm	1060 - 1080	
Ave. output power	Watts	7.5	15
Output power tunability	%	3 - 100	
Output power stability	%	< 2	
Line width (FWHM)	nm	< 1	
Polarization		Random	
General Parameters			
Operational voltage	VDC	12VDC (the system includes auto-range AC-DC power supply)	
Operating temp.	°C	0 - 40	
Dimensions	mm	290 x 120 x 50 (without heat-sink)	290 x 120 x 90 (with heat-sink)
Weight	Kg	4.3	
Wall-plug efficiency	%	> 20	
Fiber length	cm	200 (other options available)	
Output fiber collimator	mm	8 mm diameter (other options available)	
Output beam parameters		$M^2 < 1.1$	

About V-Gen

V-Gen develops, manufactures and markets high quality innovative laser systems for a wide range of industrial and medical applications. The company's laser systems are the product of extensive experience and the cutting edge know-how that V-Gen's professional team has developed over the years.

In the industrial field the company develops and manufactures pulsed Ytterbium fiber-lasers for such applications as marking and micro-machining. V-Gen's short pulse versions are primarily implemented in LIDAR and range-finding. In the medical field, V-Gen develops and manufactures diode lasers for photodynamic therapy (PDT).

V-Gen relies upon a qualified and professional distribution network to market and sell its products around the world. With a broad international base of installed systems, V-Gen laser solutions have earned the company a reputation for quality, reliability and innovation.



フォトテクニカ株式会社

〒336-0017 埼玉県さいたま市南浦和1-2-17
TEL.048-871-0067/FAX.048-871-0068

<http://www.phototechnica.co.jp/> e-mail: voc@phototechnica.co.jp

* Specifications are subject to change without prior notice