

BD

Water-cooled beam dumps for high power lasers

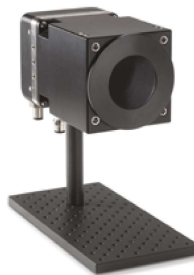


KEY FEATURES

- > **EASY TO USE**
Just plug the water-cooling and you're done!
- > **2 MODELS TO CHOOSE FROM**
 - 4 kW : BD-4KW-HE
 - 12 kW : BD-12KW-HD
- > **VERY LARGE APERTURE**
The round aperture of 100 mm in diameter accommodates even the largest beams
- > **HIGH DAMAGE THRESHOLDS**
Up to 16 kW/cm² (at 500 W)
- > **ISOLATION TUBE IN OPTION**
It is possible to add an isolation tube to reduce back reflections

REDUCE BACK-REFLECTIONS

All BD models can be fitted with a water-cooled absorbing TUBE to reduce the back-reflections below 4%. The TUBE extension is backward-compatible so it can be added to your current BD unit.



ACCESSORIES



Stand with steel post



Pelican carrying case



	BD-4KW-HE	BD-12KW-HD
MAX AVERAGE POWER (CONTINUOUS / 2 MINUTES)	4000 w / 4500 w	12000W / 12000W
EFFECTIVE APERTURE	100mm(/J)	100mm(/J)
COOLING METHOD	Water-cooled	Water-cooled


DAMAGE THRESHOLDS

Maximum average power density*		
500W	10kW/cm ²	16kW/cm ²
4kW	4kW/cm ²	---
5kW	---	6.5kW/cm ²
10kW	---	3.5kW/cm ²

PHYSICAL CHARACTERISTICS

Effective aperture	100mm(/J)	100mm(/J)
Absorber (high damage threshold)	HE	HD
Cooling water		
Required cooling flow	(4-6) LPM	(6-10) LPM
Temperature range	(15- 25) °C	(15- 25) °C
Dimensions	127H x 127W x 74D mm	127H x 127W x 70D mm
Weight (head only)	1.8kg	3.3 kg

ORDERING INFORMATION

Compatible stand	STAND-5-443-C	STAND-5-443-C
Product page		

a At 1064 nm, 1.07-7.08 μm and 10.6 μm.