

HARPIA Service App

System control and data acquisition software

A single software solution for all measurement modes, featuring:

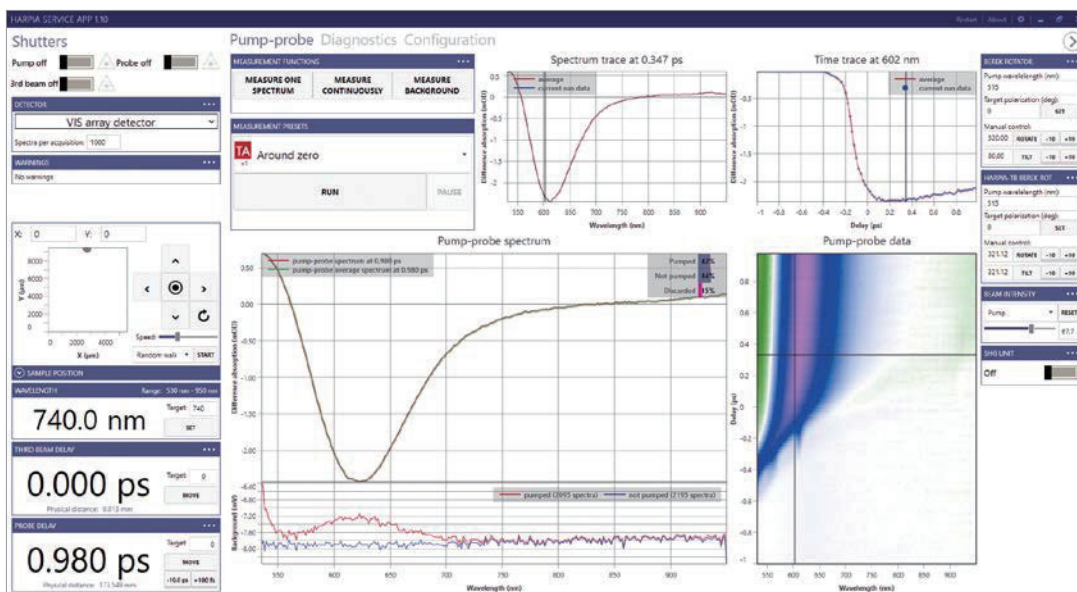
- Wizard-guided measurements and calibration
- Measurement presets
- Measurement noise suppression using data balancing and outlier detection
- Diagnostics and data export tools
- REST API for remote experiment control using third-party software

CarpetView

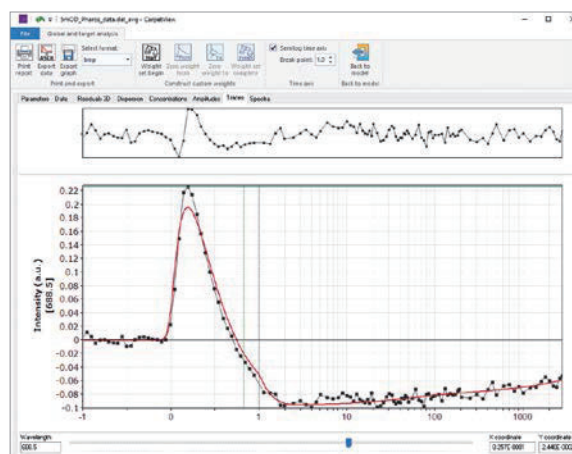
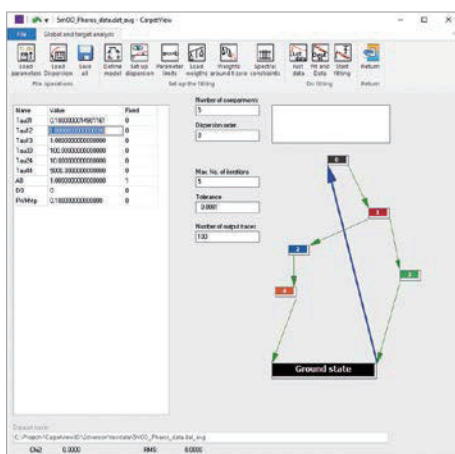
Data analysis software

An ultrafast spectroscopy data analysis software, featuring:

- Publication-quality figure preparation and data export tools
- Advanced data wrangling: slicing, merging, cropping, shifting, smoothing, fitting, subtracting, etc.
- Probe spectral chirp correction, calibration and deconvolution
- Advanced global and target analysis
- Support for three-dimensional data sets (2D electronic spectroscopy, fluorescence lifetime imaging)



HARPIA Service App main window



Global and target analysis windows of CarpetView

PHOTO TECHNICA www.phototechnica.co.jp
 フォトテクニカ株式会社

〒336-0017 埼玉県さいたま市南区南浦和 1-2-17
 TEL:048-871-0067 FAX:048-871-0068
 e-mail:voc@phototechnica.co.jp