

Watt Pilot - Motorized Attenuator, Enhanced Version



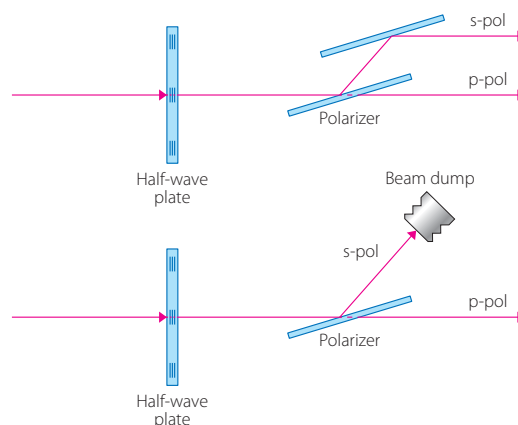
Description

Enhanced version incorporates a rotating quartz $\lambda/2$ phase Waveplate and one or two thin film polarizers which separate s-polarized and p-polarized beams. The intensity ratio of these two beams is continuously tuned by rotating the waveplate.

Watt Pilot is essential in systems, where stable laser power adjusting is necessary. Despite the stand alone device look, motorized attenuator is very compact and it can be easily integrated in custom optical system.

Features

- Divides laser beam into several beams of manually adjustable intensity ratio
- Ideal for femtosecond and high energy laser applications
- High optical damage threshold
-



Standard specifications

Clear aperture	15 mm
Bandwidth	Up to ± 20 nm
Configuration	Reflection and transmission modes
Attenuation range @ CWL	Up to 0.3-99%
Typical application	High power CW and pulsed lasers, LDs
Damage threshold	$>5 \text{ J/cm}^2$ 10 Hz, 10 ns, 1064 nm; or $>100 \text{ mJ/cm}^2$ 1 kHz 100 fs, 800 nm
Dimensions	91x63x108 mm - reflection mode
Time between min and max attenuation	3 sec
Resolution	41.54 arcsec/step
Step accuracy in full rotation	± 4 steps
Backlash	± 4 steps
	compliant