

PhotoSonus X

High Output Power DPSS Tunable Laser for Photoacoustic Imaging



PhotoSonus X is a perfect solution for photoacoustic imaging in pre-clinical and clinical use and when fast sample scanning is required. Having high output energy of up to 90 mJ at the peak, a broad wavelength tuning range from 650 to 2600 nm, high pulse repetition rate up to 100 Hz and fast wavelength switching makes it a perfect photoacoustic imaging source for gaining high-resolution images and ensuring high data acquisition rate. Moreover, being built on a diode pumped solid-state laser platform, PhotoSonus X assures

significantly quieter operation (< 60 dB) compared with flash-lamp pumped lasers, which is very beneficial for clinical use.

Diode pumped laser technology and well-engineered system design ensures high reliability and low-cost system operation. PhotoSonus X output can be coupled with almost any type of fiber bundle.

With additional options of an internal energy meter and electromechanical shutter with laser self-test capability, PhotoSonus X can be ready for certification in clinical photoacoustic applications.

FEATURES

- ▶ Ultra-wide signal tuning range from **650 to 1300 nm**
- ▶ Fully motorized wavelength tuning
- ▶ Fast Wavelength Switching
- ▶ Externally triggerable
- ▶ High, up to **90 mJ** pulse energy from OPO
- ▶ **100 Hz or 50 Hz** pulse repetition rate
- ▶ Certification ready
- ▶ Quiet operation < **60 dB**
- ▶ Integrated DPSS pump laser and OPO into a single housing
- ▶ Fiber bundle or fiber
- ▶ Signal and Idler through the same output (optional)
- ▶ Integrated energy meter (optional)
- ▶ Electromechanical output shutter with laser self-test capability

PERFORMANCE

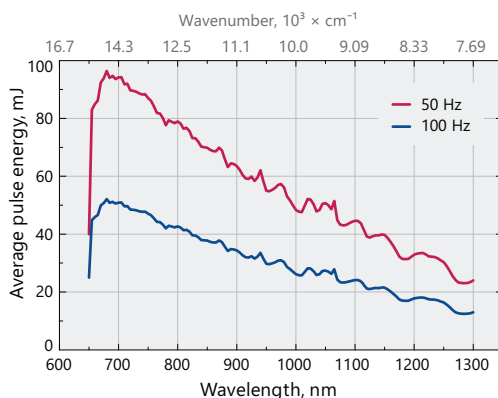


Fig 1. Typical PhotoSonus X free space extended range signal output energy vs. wavelength

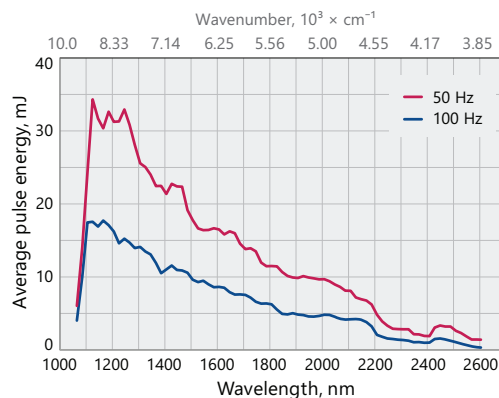


Fig 2. Typical PhotoSonus X free space idler output energy vs. wavelength

SPECIFICATIONS ¹⁾

Model	PhotoSonus X-50	PhotoSonus X-100
OPO		
Wavelength range		
Signal	650 – 1300 nm	
Idler (optional)	1065 – 2600 nm	
OPO output max pulse energy ²⁾	> 90 mJ	> 50 mJ
Pulse repetition rate ³⁾	50 Hz	100 Hz
Scanning step		
Signal	0.1 nm	
Idler	1 nm	
Pulse duration ⁴⁾	2 – 5 ns	
Signal linewidth ⁵⁾	< 15 cm ⁻¹	< 10 cm ⁻¹
Typical signal beam diameter (1/e ²) ⁶⁾	6 ± 1 mm	
Control interfaces	LAN, RS232	
PHYSICAL CHARACTERISTICS		
Cooling	Closed loop air-water cooled ⁷⁾	
Unit size (W × L × H)	551 × 400 × 162 mm	
Power supply size (W × L × H)	483 × 390 × 140 mm	
Umbilical length	0.5 m	
OPERATING REQUIREMENTS		
Room temperature	18 – 27 °C	
Relative humidity	20 – 80 % (non-condensing)	
Power requirements	100 – 240 VAC, single phase 50/60 Hz	
Power consumption	< 2 kW	

¹⁾ Due to continuous improvement, all specifications are subject to change without notice. The parameters marked typical are not specifications. They are indications of typical performance and will vary with each unit we manufacture. Unless stated otherwise all specifications are measured at 700 nm.
²⁾ Measured at the free space output. See tuning curves for typical energy levels at different wavelengths.

³⁾ Other fixed pulse repetition rates are available upon request.
⁴⁾ FWHM measured with photodiode featuring 1 ns rise time and 300 MHz bandwidth oscilloscope.
⁵⁾ At 700 nm or higher wavelength.
⁶⁾ Measured at the free space output at 700 nm wavelength.
⁷⁾ Using external chiller.



Note: Laser must be connected to the mains electricity all the time. If there will be no mains electricity for longer than 1 hour then laser (system) needs warm up for a few hours before switching on.

OUTLINE DRAWINGS

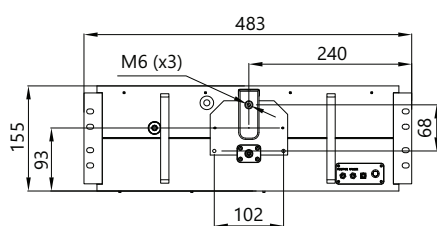


Fig 3. PhotoSonus X series laser head dimensions

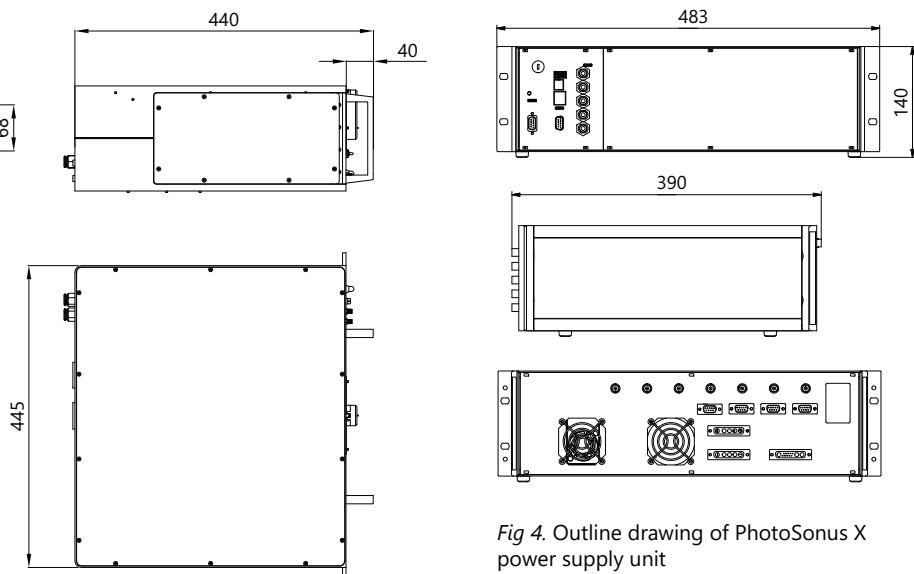


Fig 4. Outline drawing of PhotoSonus X power supply unit

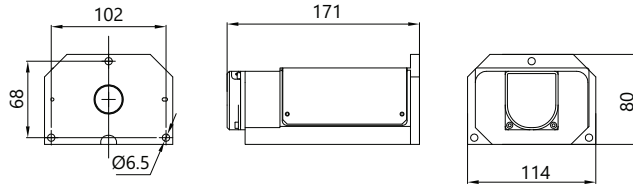
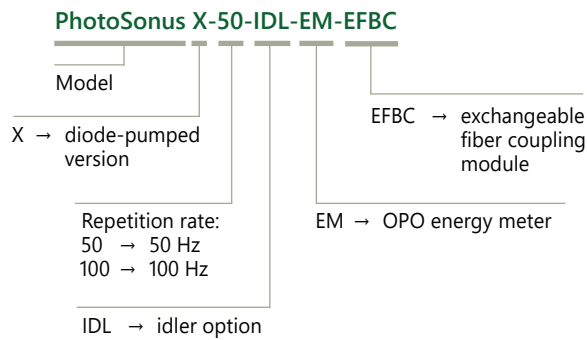


Fig 5. Outline drawing and dimensions of 3 mm fiber bundle

ORDERING INFORMATION

Note: Laser must be connected to the mains electricity all the time. If there will be no mains electricity for longer than 1 hour then laser (system) needs warm up for a few hours before switching on.



High Energy, Mobile, Tunable Wavelength Laser Source for Photoacoustic Imaging

PhotoSonus M



FEATURES

- ▶ High up to 250 mJ output energy
- ▶ Wide tuning range from 330 to 2300 nm
- ▶ Ultra-wide OPO signal tuning range from 660 to 1320 nm
- ▶ 10 Hz or 20 Hz pulse repetition rate
- ▶ Integrated pump laser, OPO and PSU in single mobile unit
- ▶ Low maintenance cost
- ▶ Fiber bundle connectors with safety interlock
- ▶ Fast Wavelength Switching within entire Signal or Idler range between two consecutive pulses
- ▶ Integrated energy meter (optional)
- ▶ Motorized attenuator (optional)
- ▶ Access to pump laser wavelengths 1064/532 nm (optional)
- ▶ Signal and Idler through the same output (optional)

Following the demand for high output energies in the photoacoustic market for imaging larger volumes of tissue, PhotoSonus M, an updated high energy tunable laser source for photo-acoustic imaging, was introduced. Time-tested Ekspla nanosecond pump laser, parametric oscillator, power supply and cooling unit are integrated in a single robust housing to provide mobility, ease of use and low maintenance cost. The highly flexible PhotoSonus M platform makes it easily integrated and used in a photoacoustic imaging system. It is fully motorized and computer controlled, with user trigger outputs and inputs and special options such as motorized switching between OPO Signal and Idler, motorized attenuator, internal energy meter and electromechanical output shutter.

Recently, a fast wavelength switching option was introduced that enables each laser pulse to have a different wavelength within the entire signal or idler range and at any sequence. This new feature, combining high pulse energy (up to 180 mJ) and wide wavelength tuning range (330 – 2300 nm) makes PhotoSonus M the irreplaceable imaging source for any photo acoustic system.

For even higher sample imaging depth and resolution a PhotoSonus M+, with up to 250 mJ maximum pulse energy, was introduced.

For convenience, the outputs of PhotoSonus M and PhotoSonus M+ lasers can be coupled with almost any type of fiber bundle.

SPECIFICATIONS ¹⁾

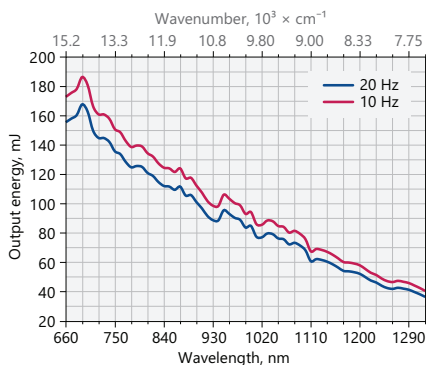
Model	PhotoSonus M-10	PhotoSonus M-20	PhotoSonus M+
OPO			
Wavelength range			
Signal	660 – 1320 nm		660 – 1064 nm ²⁾
SH extension range (optional)	330 – 659 nm		330 – 530 nm (330 – 659 nm ³⁾)
Idler (optional)	1065 – 2300 nm		
OPO output MAX pulse energy ⁴⁾	> 180 mJ	> 160 mJ	> 250 mJ
Pulse repetition rate	10 Hz	20 Hz	10 Hz
Scanning step:			
Signal	0.1 nm		
Idler	1 nm		
Pulse duration ⁵⁾	3 – 5 ns		
Signal linewidth ⁶⁾	< 10 cm ⁻¹		
Typical signal beam diameter (1/e ²) ⁷⁾	7 ± 2 mm		9 ± 2 mm
PHYSICAL CHARACTERISTICS			
Unit size (W × L × H mm)	434 × 672 × 887 mm		
OPERATING REQUIREMENTS			
Room temperature	18 – 27 °C		
Relative humidity	20 – 80 % (non-condensing)		
Power requirements ⁸⁾	208 or 240 VAC, single phase 50/60 Hz		
Power consumption	< 1.0 kVA	< 1.5 kVA	< 1.5 kVA

¹⁾ Due to continuous improvement, all specifications are subject to change without notice. The parameters marked typical are not specifications. They are indications of typical performance and will vary with each unit we manufacture. Unless stated otherwise all specifications are measured at 700 nm.
²⁾ Optional signal extended range: 660 – 1320 nm.
³⁾ When extended signal range is selected.

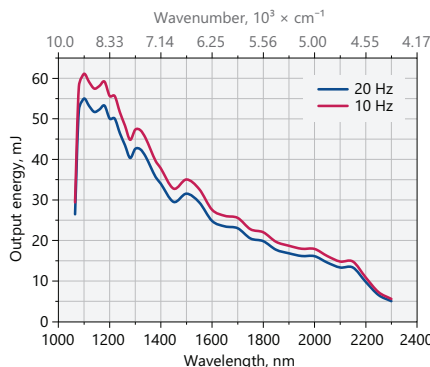
⁴⁾ Measured at the free space output. See tuning curves for typical energy levels at different wavelengths.
⁵⁾ FWHM measured with photodiode featuring 1 ns rise time and 300 MHz bandwidth oscilloscope.
⁶⁾ At 700 nm or higher wavelengths.
⁷⁾ Measured at the free space output at 700 nm. Can be adjusted as per request.
⁸⁾ Mains voltage should be specified when ordering.



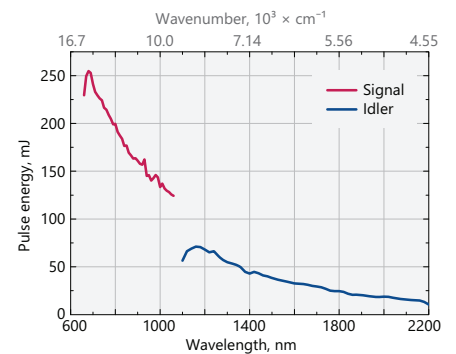
PERFORMANCE



Typical PhotoSonus M-10 and M-20 Extended signal output pulse energy vs. wavelength curve



Typical PhotoSonus M-10 and M-20 Idler output pulse energy vs. wavelength curve



Typical PhotoSonus M+ signal and idler output pulse energy vs. wavelength curve

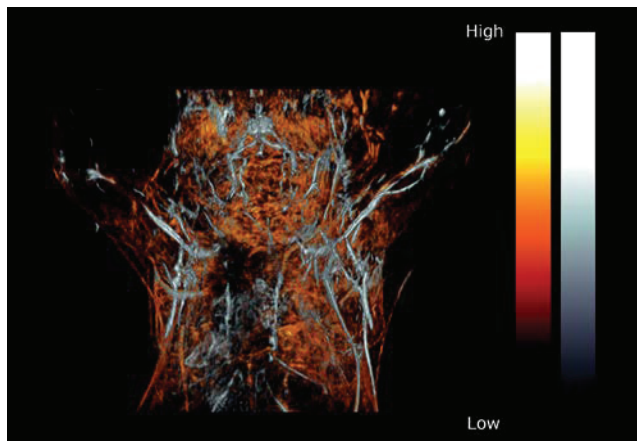
SAMPLE PHOTOACOUSTIC IMAGES



Photoacoustic image of a mouse.



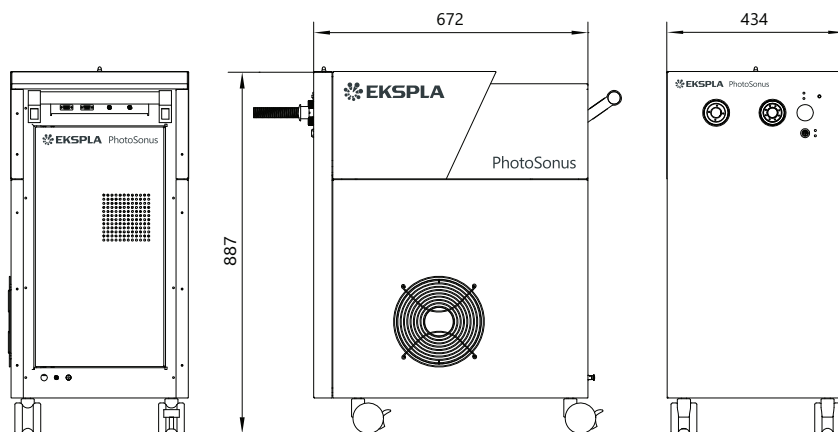
Photoacoustic image of the mouse liver.



Photoacoustic image of the upper torso and brain of a female mouse.

Courtesy of PhotoSound Technologies, Inc.

DRAWINGS



PhotoSonus M outline drawings (mm)

ORDERING INFORMATION

Note: Laser must be connected to the mains electricity all the time. If there will be no mains electricity for longer than 1 hour then laser (system) needs warm up for a few hours before switching on.

PhotoSonus M-10-IDL-SH-ATTN-H-EM-PD

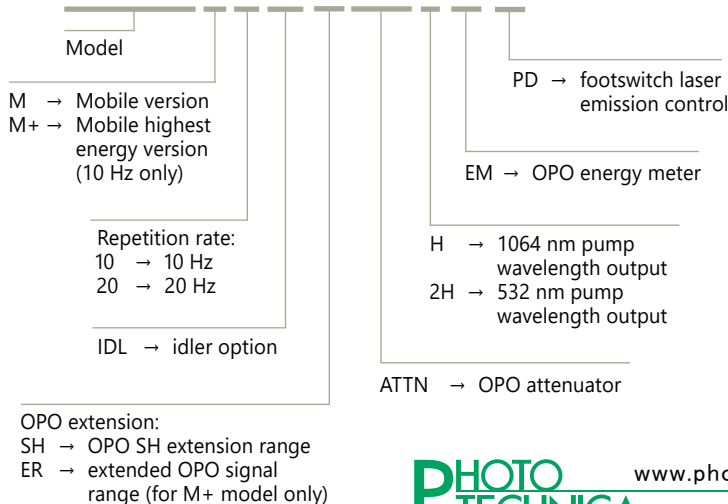


PHOTO TECHNICA www.phototechnica.co.jp
 フォトテクニカ株式会社
 〒336-0017 埼玉県さいたま市南区南浦和 1-2-17
 TEL:048-871-0067 FAX:048-871-0068
 e-mail:voc@phototechnica.co.jp

PhotoSonus T



BENEFITS

- ▶ High pulse energy (up to 230 mJ) is highly beneficial for photoacoustics imaging applications
- ▶ Superior tuning resolution ($1 - 2 \text{ cm}^{-1}$) allows recording of high quality spectra
- ▶ High integration level saves valuable space in the laboratory
- ▶ Flashlamps replacement without misalignment of the laser cavity saves on maintenance costs
- ▶ In-house design and manufacturing of complete systems, including pump lasers, guarantees on-time warranty and post warranty services and spares supply
- ▶ Variety of control interfaces: USB, RS232, optional LAN and WLAN ensures easy control and integration with other equipment
- ▶ Attenuator and fiber bundle coupling options facilitate incorporation of PhotoSonus T systems into various experimental environments

PhotoSonus T series tunable laser seamlessly integrates in a compact housing a nanosecond optical parametric oscillator and Nd:YAG Q-switched laser.

Three models with different output pulse energy values and different repetition rates are offered. The most powerful model has more than 230 mJ pulse energy. Narrow linewidth ($<10 \text{ cm}^{-1}$) is nearly constant through almost whole tuning range, which makes laser suitable for many spectroscopy application.

The device is controlled from the remote keypad or PC using LabVIEW™ drivers that are supplied with the system. The remote pad features a backlit display that is easy to read even while wearing laser safety glasses.

System is designed for easy and cost-effective maintenance. Replacement of flashlamps can be done without misalignment of the laser cavity and deterioration of laser performance. OPO pump energy monitoring system helps to increase lifetime of the optical components.

High Energy Table-Top Tunable Wavelength Lasers for Photoacoustic Imaging

FEATURES

- ▶ Hands-free, automated wavelength tuning from 330 to 2600 nm
- ▶ Ultra-wide OPO signal tuning range from 660 to 1320 nm
- ▶ Up to 230 mJ in range 660 – 2600 nm, 35 mJ in range 330 – 660 nm
- ▶ Narrow linewidth across tuning range
- ▶ 3–5 ns pulse duration
- ▶ Remote control via key pad or PC
- ▶ Separate output port for 532 nm beam. Output for 1064 nm is optional
- ▶ OPO pump energy monitoring
- ▶ Fast Wavelength Switching within entire Signal or Idler ranges

APPLICATIONS

- ▶ Photoacoustic imaging
- ▶ Flash photolysis
- ▶ Photobiology
- ▶ Remote sensing
- ▶ Non-linear spectroscopy

Options

Optional items are available allowing optimization of the laser system for Your application, for example:

- ▶ Fiber bundle coupled output;
- ▶ Energy meter;
- ▶ Efficient second harmonic generator for 330–660 nm range;
- ▶ Pulse energy attenuator;
- ▶ Water-air cooled power supply.

Please inquire custom-build versions and options.

SPECIFICATIONS ¹⁾

Model	PhotoSonus T-10	PhotoSonus T-20	PhotoSonus T+
OPO			
Wavelength range			
Signal	660–1320 nm		660–1064 nm ²⁾
Idler	1065–2600 nm		
SH (optional)	330–660 nm		330 – 530 nm (330 – 659 nm) ³⁾
Output max pulse energy ⁴⁾			
OPO	150 mJ	130 mJ	230 mJ
SH	25 mJ	21 mJ	35 mJ
Linewidth ⁵⁾	< 10 cm ⁻¹		< 20 cm ⁻¹
Tuning resolution ⁶⁾			
Signal	1 cm ⁻¹		
Idler	1 cm ⁻¹		
SH	2 cm ⁻¹		
Pulse duration ⁷⁾	3–5 ns		
Typical beam diameter ⁸⁾	7 mm		9 mm
Typical beam divergence ⁹⁾	<2 mrad		
Polarization			
Signal beam	horizontal		
Idler beam	vertical		
SH beam	vertical		
PUMP LASER ¹⁰⁾			
Pump wavelength	532 nm		
Pulse duration	4 – 6 ns		
Beam quality	"Hat-Top" in near field. Close to Gaussian in far field		
Beam divergence	<0.6 mrad		
Pulse energy stability (StdDev)	<2.5 %		
Pulse repetition rate	10 Hz	20 Hz	10 Hz
PHYSICAL CHARACTERISTICS			
Unit size (W × L × H)	456 × 821 × 270 mm		
Power supply size (W × L × H)	330 × 490 × 585 mm		
Umbilical length	2.5 m		
OPERATING REQUIREMENTS			
Water consumption (max 20 °C) ¹¹⁾	<10 l/min		
Room temperature	18–27 °C		
Relative humidity	20–80 % (non-condensing)		
Power requirements ¹²⁾	200 – 240 VAC, single phase, 50/60 Hz		
Power consumption	< 1.5 kW		
Cleanliness of the room	not worse than ISO Class 9		

¹⁾ Due to continuous improvement, all specifications are subject to change without notice. The parameters marked typical are not specifications. They are indications of typical performance and will vary with each unit we manufacture. Unless stated otherwise all specifications are measured at 700 nm and for basic system without options.

²⁾ Optional signal extended range: 660 – 1320 nm.

³⁾ When extended signal range is selected.

⁴⁾ See tuning curves for typical outputs at different wavelengths.

⁵⁾ At 700 nm or higher wavelengths.

⁶⁾ When wavelength is controlled from PC. When wavelength is controlled from keypad, tuning resolution is 0.1 nm for signal, 1 nm for idler and 0.5 nm for SH.

⁷⁾ FWHM measured with photodiode featuring 1 ns rise time and 300 MHz bandwidth oscilloscope.

⁸⁾ Beam diameter is measured at 700 nm at the 1/e² level and can vary depending on the pump pulse energy.

⁹⁾ Full angle measured at the FWHM level at 700 nm.

¹⁰⁾ Separate output port for the 532 nm beam is standard. Output for 1064 nm beam is optional. Pump laser output will be optimized for the best OPO operation and specification may vary with each unit we manufacture.

¹¹⁾ Air cooled power supply is available as option.

¹²⁾ Mains voltage should be specified when ordering.



PERFORMANCE

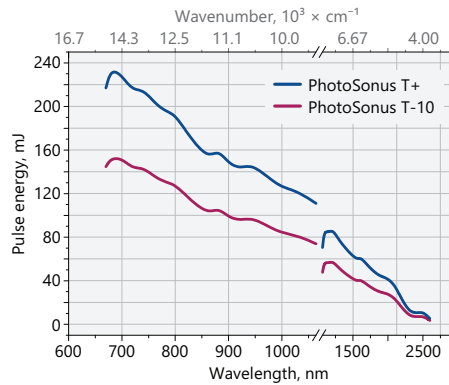


Fig 1. Typical output energy of the PhotoSonus T tunable wavelength systems

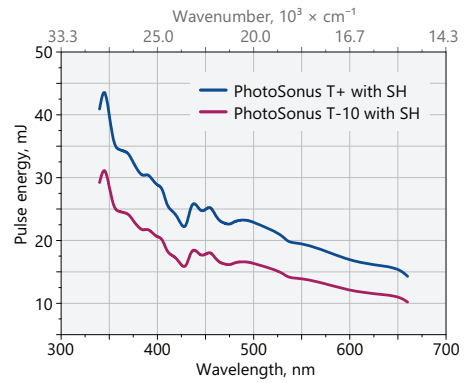


Fig 2. Typical output energy of the PhotoSonus T tunable wavelength systems with SH option

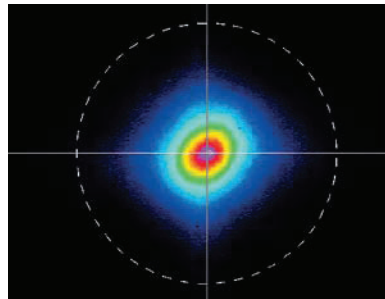


Fig 3. Typical far field beam profile of PhotoSonus T laser at 800 nm

ORDERING INFORMATION

Note: Laser must be connected to the mains electricity all the time. If there will be no mains electricity for longer than 1 hour then laser (system) needs warm up for a few hours before switching on.

