

External Harmonic Generator

515 nm, 343 nm, 257 nm,
and 206 nm outputs

Simple selection of the active harmonic

Simultaneous or switchable outputs

Standalone harmonics module
for CARBIDE, PHAROS and FLINT



HIRO for CARBIDE or PHAROS

Model	HIRO	HIRO-HP	HIRO-HE
Maximum pump power	20 W	80 W	
Pump pulse energy	8 – 400 μ J	200 – 1000 μ J	1000 – 4000 μ J
Available outputs ^{1) 2)}	Up to 4H ³⁾	Up to 5H	
Conversion efficiency ^{1) 4)}		> 50% (2H) > 25% (3H) > 10% (4H) ⁵⁾ > 5% (5H) ^{6) 7)}	
Polarization ⁸⁾		Linear, horizontal (2H, 5H) Linear, vertical (3H, 4H)	

PHYSICAL DIMENSIONS

Dimensions (L x W x H)	487 x 176 x 180 mm	552 x 320 x 170 mm
------------------------	--------------------	--------------------

¹⁾ For harmonic combinations and simultaneous outputs, contact sales@lightcon.com.

²⁾ Residual fundamental output available upon request.

³⁾ White light continuum output available upon request.

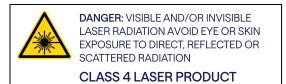
⁴⁾ Percentage of pump power, for repetition rate of up to 1 MHz.

⁵⁾ Maximum output power of 1W.

⁶⁾ Maximum output power of 150 mW. Only for HIRO-HP/HE.

⁷⁾ > 1% when pumped with PHAROS-UP.

⁸⁾ Different polarization is available upon request.



HIRO for FLINT

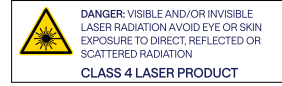
Model	HIRO
Available harmonic	Up to 4H
Maximum pump power ¹⁾	4 W
Conversion efficiency ²⁾	> 35% (2H) > 5% (3H) > 1% (4H)

PHYSICAL DIMENSIONS

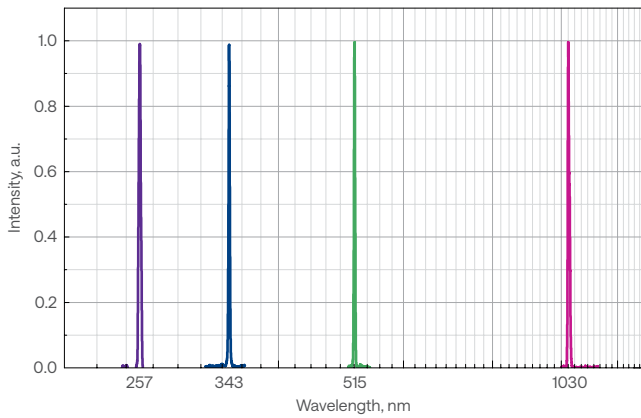
Dimensions (L × W × H)	487 × 176 × 180 mm
------------------------	--------------------

¹⁾ For high power 2H, refer to HG for FLINT.

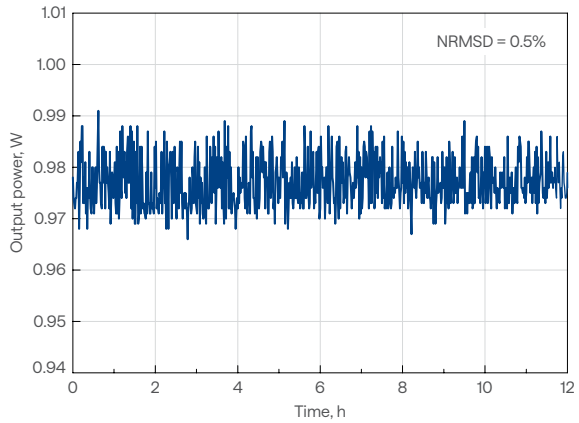
²⁾ For pump power of > 500 mW.



HIRO outputs

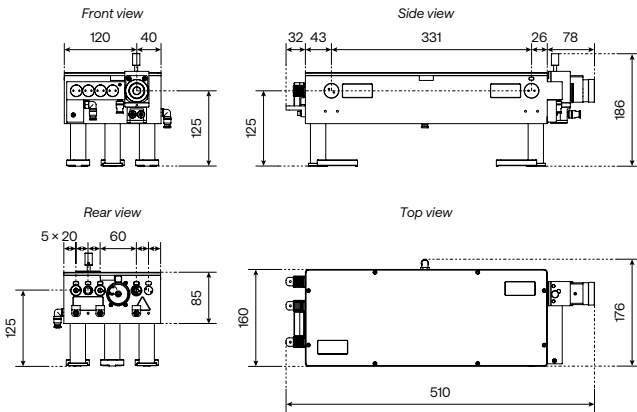


4H output power stability



Drawings

HIRO



HIRO-HP/HE

