

ns

Photoacoustic
Imaging
Sources

PhotoSonus X



See list of publications
written by employing
PhotoSonus series lasers



High Output Power DPSS Tunable Laser for Photoacoustic Imaging

PhotoSonus X

PhotoSonus X is a perfect solution for photoacoustic imaging in pre-clinical and clinical use and when fast sample scanning is required.

Having high output energy of up to 90 mJ at the peak, a broad wavelength tuning range from 660 to 2600 nm, high pulse repetition rate up to 100 Hz and fast wavelength switching makes it a perfect photoacoustic imaging source for gaining high-resolution images and ensuring high data acquisition rate. Moreover, being built on a diode pumped solid-state laser platform, PhotoSonus X assures significantly quieter operation (< 60 dB) compared with flash-lamp pumped lasers, which is very beneficial for clinical use.

Diode pumped laser technology and well-engineered system design ensures high reliability and low-cost system operation. PhotoSonus X output can be coupled with almost any type of fiber bundle.

With additional options of an internal energy meter and electromechanical shutter with laser self-test capability, PhotoSonus X can be ready for certification in clinical photoacoustic applications.

Features

Ultra-wide signal tuning range from **660 to 1300 nm**

Fully motorized wavelength tuning

Fast wavelength switching

Externally triggerable

High, up to **90 mJ** pulse energy from OPO

100 Hz or **50 Hz** pulse repetition rate

Certification ready

Quiet operation < **60 dB**

Integrated DPSS pump laser and OPO into a single housing

Fiber bundle or fiber

Signal and idler through the same output (optional)

Integrated energy meter (optional)

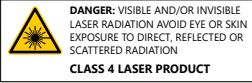
Electromechanical output shutter with laser self-test capability

660 –
1300 nm / 90 mJ / < 60 dB



Learn more
about PhotoSonus X
www.ekspla.com

Specifications ¹⁾

Model	PhotoSonus X-50	PhotoSonus X-100
OPO		
Wavelength range	Signal	660 – 1300 nm
	Idler (optional)	1065 – 2600 nm
OPO output max pulse energy ²⁾	> 90 mJ	> 50 mJ
Pulse repetition rate ³⁾	50 Hz	100 Hz
Scanning step	Signal	0.1 nm
	Idler	1 nm
Pulse duration ⁴⁾	2 – 5 ns	
Signal linewidth ⁵⁾	< 15 cm ⁻¹	
Typical signal beam diameter (1/e ²) ⁶⁾	6 ± 1 mm	
Control interfaces	LAN, RS232	
Physical characteristics		
Cooling	Closed loop air-water cooled ⁷⁾	
Unit size (W × L × H)	551 × 400 × 162 mm	
Power supply size (W × L × H)	483 × 390 × 140 mm	
Umbilical length	0.5 m	
Operating requirements		
Room temperature	18 – 27 °C	
Relative humidity	20 – 80 % (non-condensing)	
Power requirements	100 – 240 VAC, single phase 50/60 Hz	
Power consumption	< 2 kW	
<p>¹⁾ Due to continuous improvement, all specifications are subject to change without notice. The parameters marked typical are not specifications. They are indications of typical performance and will vary with each unit we manufacture. Unless stated otherwise all specifications are measured at 700 nm.</p> <p>²⁾ Measured at the free space output. See tuning curves for typical energy levels at different wavelengths.</p> <p>³⁾ Other fixed pulse repetition rates are available upon request.</p> <p>⁴⁾ FWHM measured with photodiode featuring 1 ns rise time and 300 MHz bandwidth oscilloscope.</p> <p>⁵⁾ At 700 nm or higher wavelength.</p> <p>⁶⁾ Measured at the free space output at 700 nm wavelength.</p> <p>⁷⁾ Using external chiller.</p>		
		

Performance

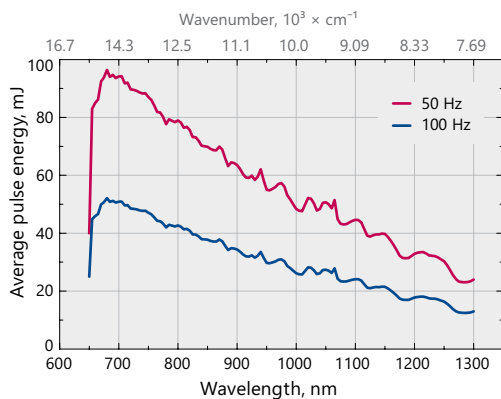


Fig 1. Typical PhotoSonus X free space extended range signal output energy vs. wavelength

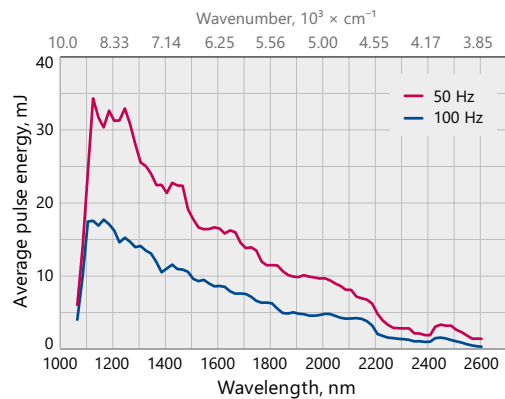


Fig 2. Typical PhotoSonus X free space idler output energy vs. wavelength

Drawings

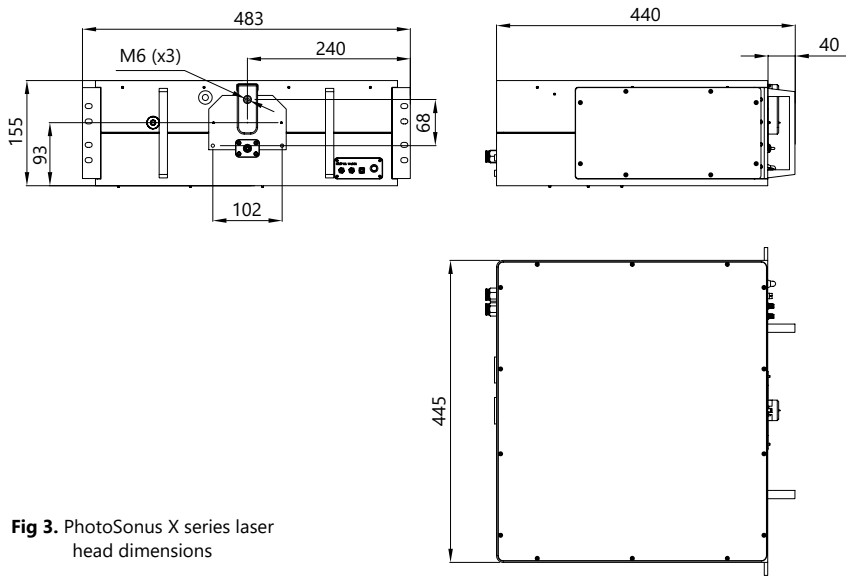


Fig 3. PhotoSonus X series laser head dimensions

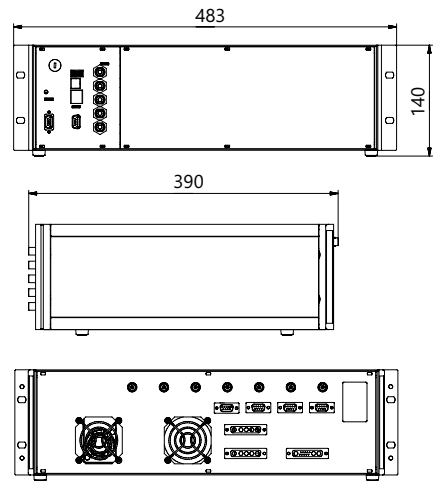


Fig 4. Outline drawing of PhotoSonus X power supply unit

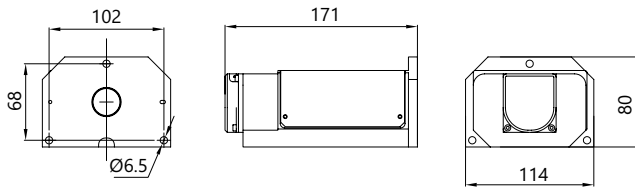


Fig 5. Outline drawing and dimensions of 3 mm fiber bundle



Fig 6. PhotoSonus X laser head with power supply units and cooling chiller installed in one rack

Ordering information

Note: Laser must be connected to the mains electricity all the time. If there will be no mains electricity for longer than 1 hour then laser (system) needs warm up for a few hours before switching on.

PhotoSonus X-50-IDL-EM-EFBC	
Model	EFBC → exchangeable fiber coupling module
X → diode-pumped version	EM → OPO energy meter
Repetition rate: 50 → 50 Hz 100 → 100 Hz	IDL → idler option

ns

Photoacoustic
Imaging
Sources

PhotoSonus M



See list of publications
written by employing
PhotoSonus series lasers



High Energy, Mobile, Tunable Wavelength Laser Source for Photoacoustic Imaging

PhotoSonus M

Following the demand for high output energies in the photoacoustic market for imaging larger volumes of tissue, PhotoSonus M, an updated high energy tunable laser source for photo-acoustic imaging, was introduced.

Time-tested EKSPLA nanosecond pump laser, parametric oscillator, power supply and cooling unit are integrated in a single robust housing to provide mobility, ease of use and low maintenance cost. The highly flexible PhotoSonus M platform makes it easily integrated and used in a photoacoustic imaging system. It is fully motorized and computer controlled, with user trigger outputs and inputs and special options such as motorized switching between OPO signal and idler, motorized attenuator, internal energy meter and electromechanical output shutter.

Recently, a fast wavelength switching option was introduced that enables each laser pulse to have a different wavelength within the entire signal or idler range and at any sequence. This new feature, combining high pulse energy (up to 180 mJ) and wide wavelength tuning range (330 – 2300 nm) makes PhotoSonus M the irreplaceable imaging source for any photo acoustic system.

For even higher sample imaging depth and resolution a PhotoSonus M+, with up to 250 mJ maximum pulse energy, was introduced.

For convenience, the outputs of PhotoSonus M and PhotoSonus M+ lasers can be coupled with almost any type of fiber bundle.

Features

High up to **250 mJ** output energy

Wide tuning range from **330 to 2300 nm**

Ultra-wide OPO signal tuning range from **660 to 1320 nm**

10 Hz or **20 Hz** pulse repetition rate

Integrated pump laser, OPO and PSU in single mobile unit

Low maintenance cost

Fiber bundle connectors with safety interlock

Fast wavelength switching within entire signal or idler range between two consecutive pulses

Integrated energy meter (optional)

Motorized attenuator (optional)

Access to pump laser wavelengths 1064/532 nm (optional)

330 –
2300 nm

250 mJ

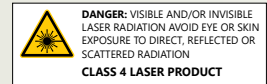
10 Hz
20 Hz



Learn more
about PhotoSonus M
www.ekspla.com

Specifications ¹⁾

Model	PhotoSonus M-10	PhotoSonus M-20	PhotoSonus M+
OPO			
Wavelength range	Signal	660 – 1320 nm	660 – 1064 nm ²⁾
	SH extension range (optional)	330 – 659 nm	330 – 530 nm (330 – 659 nm ³⁾)
	Idler (optional)		1065 – 2300 nm
OPO output MAX pulse energy ⁴⁾	> 180 mJ	> 160 mJ	> 250 mJ
Pulse repetition rate	10 Hz	20 Hz	10 Hz
Scanning step	Signal	0.1 nm	
	Idler	1 nm	
Pulse duration ⁵⁾		3 – 5 ns	
Signal linewidth ⁶⁾		< 15 cm ⁻¹	
Typical signal beam diameter (1/e ²) ⁷⁾		7 ± 2 mm	9 ± 2 mm
Physical characteristics			
Unit size (W × L × H mm)	434 × 672 × 887 mm		
Operating requirements			
Room temperature	18 – 27 °C		
Relative humidity	20 – 80 % (non-condensing)		
Power requirements ⁸⁾	200 – 240 VAC, single phase, 50/60 Hz		
Power consumption	< 1.5 kVA	< 2.5 kVA	< 2.5 kVA
<p>¹⁾ Due to continuous improvement, all specifications are subject to change without notice. The parameters marked typical are not specifications. They are indications of typical performance and will vary with each unit we manufacture. Unless stated otherwise all specifications are measured at 700 nm.</p> <p>²⁾ Optional signal extended range: 660 – 1320 nm.</p> <p>³⁾ When extended signal range is selected.</p> <p>⁴⁾ Measured at the free space output. See tuning curves for typical energy levels at different wavelengths.</p> <p>⁵⁾ FWHM measured with photodiode featuring 1 ns rise time and 300 MHz bandwidth oscilloscope.</p> <p>⁶⁾ At 700 nm or higher wavelengths.</p> <p>⁷⁾ Measured at the free space output at 700 nm. Can be adjusted as per request.</p> <p>⁸⁾ Mains voltage should be specified when ordering.</p>			



Performance

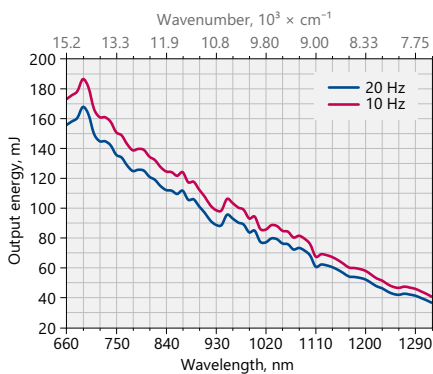


Fig 1. Typical PhotoSonus M-10 and M-20 Extended signal output pulse energy vs. wavelength curve

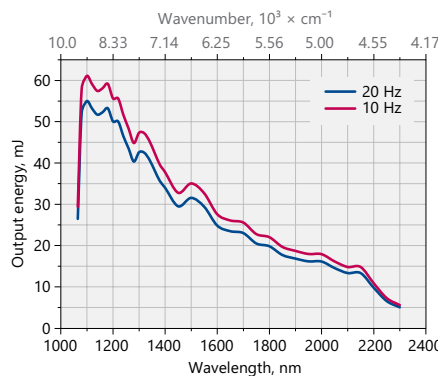


Fig 2. Typical PhotoSonus M-10 and M-20 Idler output pulse energy vs. wavelength curve

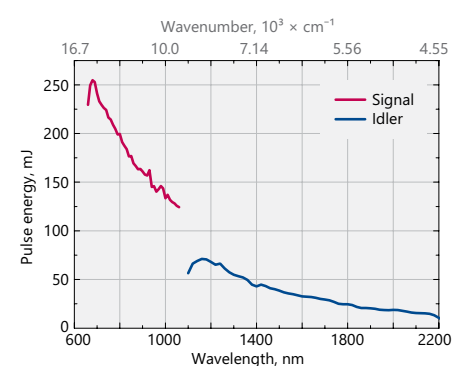
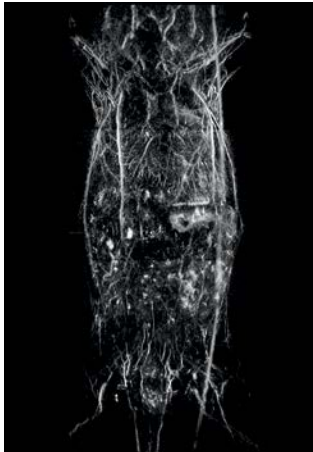


Fig 3. Typical PhotoSonus M+ signal and idler output pulse energy vs. wavelength curve

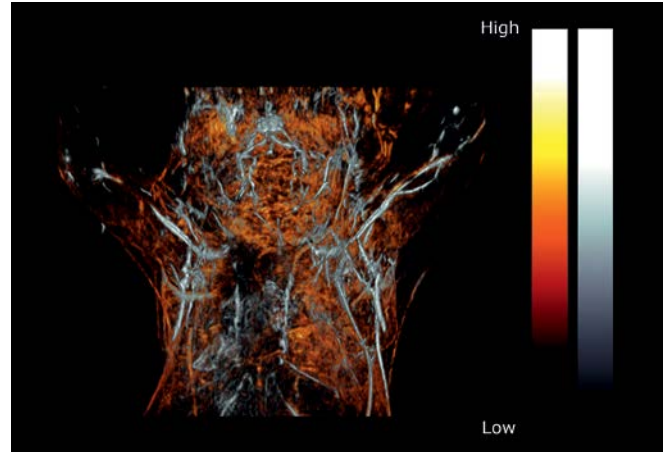
Sample Photoacoustic Images



Photoacoustic image of a mouse.



Photoacoustic image of the mouse liver.



Photoacoustic image of the upper torso and brain of a female mouse.

Courtesy of PhotoSound Technologies, Inc.

Drawings

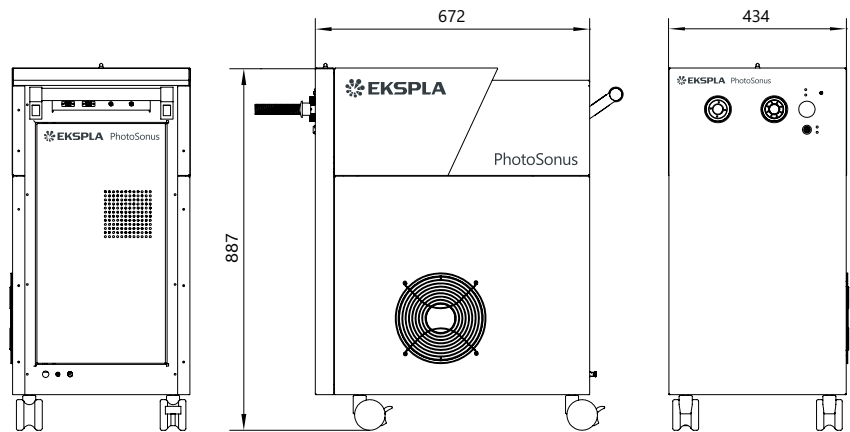


Fig 4. PhotoSonus M outline drawings (mm)

Ordering information

Note: Laser must be connected to the mains electricity all the time. If there will be no mains electricity for longer than 1 hour then laser (system) needs warm up for a few hours before switching on.

PhotoSonus M-10-IDL-SH-ATTN-H-EM-PD

Model	PD → footswitch laser emission control
M → Mobile version	EM → OPO energy meter
M+ → Mobile highest energy version (10 Hz only)	H → 1064 nm pump wavelength output
Repetition rate:	2H → 532 nm pump wavelength output
10 → 10 Hz	
20 → 20 Hz	
IDL → idler option	ATTN → OPO attenuator
OPO extension:	
SH → OPO SH extension range	
ER → extended OPO signal range (for M+ model only)	

PhotoSonus T

BENEFITS

High pulse energy (up to 230 mJ) is highly beneficial for photoacoustics imaging applications

Superior tuning resolution ($1 - 2 \text{ cm}^{-1}$) allows recording of high quality spectra

High integration level saves space in the laboratory

Flashlamps replacement without misalignment of the laser cavity saves on maintenance costs

In-house design and manufacturing of complete systems, including pump lasers, guarantees on-time warranty and post warranty services and spares supply

Variety of control interfaces: USB, RS232, optional LAN and WLAN ensures easy control and integration with other equipment

Attenuator and fiber bundle coupling options facilitate incorporation of PhotoSonus T systems into various experimental environments



High Energy Table-Top Tunable Wavelength Lasers for Photoacoustic Imaging

PhotoSonus T

PhotoSonus T series tunable laser seamlessly integrates in a compact housing a nanosecond optical parametric oscillator and Nd:YAG Q-switched laser.

Three models with different output pulse energy values and different repetition rates are offered. The most powerful model has more than 230 mJ pulse energy. Narrow linewidth ($<10 \text{ cm}^{-1}$) is nearly constant through almost whole tuning range, which makes laser suitable for many spectroscopy application.

The device is controlled from the remote keypad or PC using LabVIEW™ drivers that are supplied with the system. The remote pad features a backlit display that is easy to read even while wearing laser safety glasses.

System is designed for easy and cost-effective maintenance. Replacement of flashlamps can be done without misalignment of the laser cavity and deterioration of laser performance. OPO pump energy monitoring system helps to increase lifetime of the optical components.

Options

Optional items are available allowing optimization of the laser system for Your application, for example:

- / Fiber bundle coupled output;
- / Energy meter;
- / Efficient second harmonic generator for 330–660 nm range;
- / Pulse energy attenuator;
- / Water-air cooled power supply.

Please inquire custom-build versions and options.

Features

Hands-free, automated wavelength tuning from **330 to 2600 nm**

Ultra-wide OPO signal tuning range from **660 to 1320 nm**

Up to **230 mJ** in range 660 – 2600 nm, **35 mJ** in range 330 – 660 nm

Narrow linewidth across tuning range

3–5 ns pulse duration

Remote control via key pad or PC

Separate output port for 532 nm beam. Output for 1064 nm is optional

OPO pump energy monitoring

Fast wavelength switching within entire signal or idler ranges

Applications

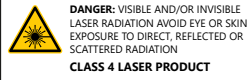
- / Photoacoustic imaging
- / Flash photolysis
- / Photobiology
- / Remote sensing
- / Non-linear spectroscopy

330 – 2600 nm / 230 mJ / 3 – 5 ns



Learn more
about PhotoSonus T
www.ekspla.com

Specifications ¹⁾

Model		PhotoSonus T-10	PhotoSonus T-20	PhotoSonus T+
OPO				
Wavelength range	Signal	660–1320 nm	660–1320 nm	660–1064 nm ²⁾
	Idler	1065–2600 nm	1065–2600 nm	1065–2600 nm
	SH (optional)	330–660 nm	330–660 nm	330 – 530 nm (330 – 659 nm) ³⁾
Output max pulse energy ⁴⁾	OPO	150 mJ	130 mJ	230 mJ
	SH	25 mJ	21 mJ	35 mJ
Linewidth ⁵⁾			< 15 cm ⁻¹	
Tuning resolution ⁶⁾	Signal		1 cm ⁻¹	
	Idler		1 cm ⁻¹	
	SH		2 cm ⁻¹	
Pulse duration ⁷⁾			3–5 ns	
Typical beam diameter ⁸⁾		7 mm	7 mm	9 mm
Typical beam divergence ⁹⁾			<2 mrad	
Polarization	Signal beam		horizontal	
	Idler beam		vertical	
	SH beam		vertical	
Pump laser ¹⁰⁾				
Pump wavelength			532 nm	
Pulse duration			4 – 6 ns	
Beam quality		"Hat-Top" in near field. Close to Gaussian in far field		
Beam divergence			<0.6 mrad	
Pulse energy stability (StdDev)			<2.5 %	
Pulse repetition rate		10 Hz	20 Hz	10 Hz
Physical characteristics				
Unit size (W × L × H)			456 × 821 × 270 mm	
Power supply size (W × L × H)			330 × 490 × 585 mm	
Umbilical length			2.5 m	
Operating requirements				
Water consumption (max 20 °C) ¹¹⁾			<10 l/min	
Room temperature			18–27 °C	
Relative humidity			20–80 % (non-condensing)	
Power requirements ¹²⁾		200 – 240 VAC, single phase, 50/60 Hz		
Power consumption		< 1.5 kVA	< 2.5 kVA	< 2.5 kVA
Cleanliness of the room		not worse than ISO Class 9		
¹⁾ Due to continuous improvement, all specifications are subject to change without notice. The parameters marked typical are not specifications. They are indications of typical performance and will vary with each unit we manufacture. Unless stated otherwise all specifications are measured at 700 nm and for basic system without options.		⁷⁾ FWHM measured with photodiode featuring 1 ns rise time and 300 MHz bandwidth oscilloscope.		
²⁾ Optional signal extended range: 660 – 1320 nm.		⁸⁾ Beam diameter is measured at 700 nm at the 1/e ² level and can vary depending on the pump pulse energy.		
³⁾ When extended signal range is selected.		⁹⁾ Full angle measured at the FWHM level at 700 nm.		
⁴⁾ See tuning curves for typical outputs at different wavelengths.		¹⁰⁾ Separate output port for the 532 nm beam is standard. Output for 1064 nm beam is optional. Pump laser output will be optimized for the best OPO operation and specification may vary with each unit we manufacture.		
⁵⁾ At 700 nm or higher wavelengths.		¹¹⁾ Air cooled power supply is available as option.		
⁶⁾ When wavelength is controlled from PC. When wavelength is controlled from keypad, tuning resolution is 0.1 nm for signal, 1 nm for idler and 0.5 nm for SH.		¹²⁾ Mains voltage should be specified when ordering.		

Performance

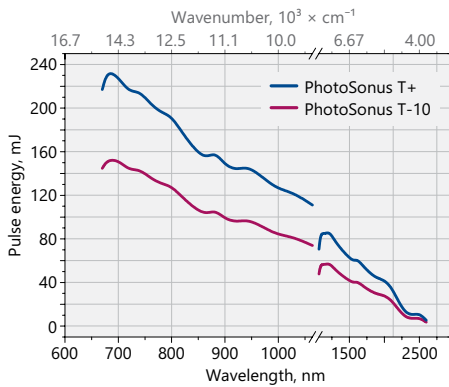


Fig 1. Typical output energy of the PhotoSonus T tunable wavelength systems

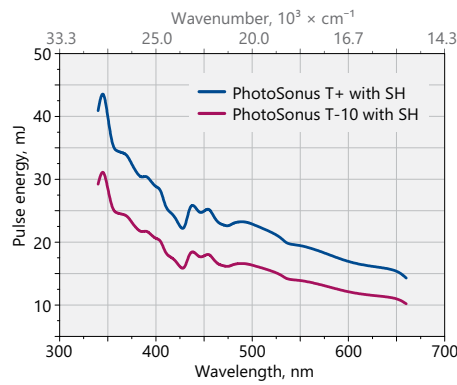


Fig 2. Typical output energy of the PhotoSonus T tunable wavelength systems with SH option

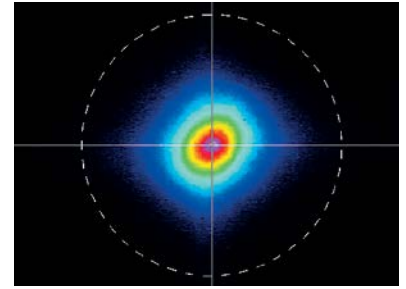


Fig 3. Typical far field beam profile of PhotoSonus T laser at 800 nm

Ordering information

Note: Laser must be connected to the mains electricity all the time. If there will be no mains electricity for longer than 1 hour then laser (system) needs warm up for a few hours before switching on.

PhotoSonus T-10-SH-FBC-ATTN-H-EM-AW10-TrigBox-110VAC	
Model	110VAC → transformer for 110 V AC mains
T → Table-top version	
T+ → Table-top highest energy version (10 Hz only)	TrigBox → synchronization box
Repetition rate:	Water-air cooling unit:
10 → 10 Hz	AW10 → for 10 Hz models
20 → 20 Hz	AW20 → for 20 Hz models
OPO extension:	EM → OPO energy meter
SH → OPO SH extension range	
ER → extended OPO signal range (for T+ model only)	H → additional output for 1064 nm pump wavelength
FBC → fiber or fiber bundle coupling of OPO output without attenuator	ATTN → OPO attenuator
	ATTN/FBC → OPO attenuator for FBC output
	ATTN/FBC/FS → OPO attenuator for both FBC and free space outputs


www.phototechnica.co.jp
 フォトテクニカ株式会社
 〒336-0017 埼玉県さいたま市南区南浦和 2-18-2
 TEL:048-871-0067 FAX:048-871-0068
 e-mail:voc@phototechnica.co.jp